

# TRIZO HOME ELEVATORS<sup>®</sup>

Experience Italian Craftsmanship  
with Certified Home Elevators at Affordable Price



Lifting Luxury to New Heights

**Z400+** / **Z400** / **Z350** / **Z250** / **Z220**





**Z400+**

### **NO PIT**

Our Home elevators do not require a pit of more than 200mm

### **NO HEAD ROOM**

Headroom is meant for commercial elevators. We require an FFL- Ceiling of only 2500mm

### **NO MACHINE ROOM**

As per machine directive code, Machine room should never be placed inside the elevator shaft

### **NO LICENSE**

No government license is required as we consume only single phase electricity power

### **NO AMC**

Our patented technology allows our client to feel absolutely safe without routine maintenance





Z400



## Z400+ SPECIFICATION

State Of The Art Technology Finally at affordable Cost. Z400 model Works On a Patented Belt Drive Technology With Counterweights. This In Turn Helps With Better Speed With No Friction, Completely Ruling Out The Possibility For Greasing And Oiling.



Technical Compliance	Machine Directive 2006/42/EC En81-41
Drive System	Advanced Belt Drive with Pulley System
Rated Speed	0.50 m/s Up To 1.00 m/s
Rated Load	Up To 450kg
Travel Height	Up To 20,000 Mm / 65.6ft
Number Of Stops	Max. 6 Stops Per Lift
Number Of Doors	Max. 12 Doors Per Lift
Door Types	Swing / Sliding Door
Pit	200 mm (No Pit Is Required In Case Of Threshold/Ramp)
Shaft Top Height	2450 Mm In Existing Shafts / 2550 Mm With Its Own Shaft
Platform Control	Automatic (One Touch) With Call Reservation
Environment	Indoor / Outdoor
Emergency Lowering	Battery Operated Emergency Lowering
Control Voltage	24V





Z350



## Z350 Specification

The Z350 Incorporates Proven and Reliable Hydraulic Technology and Offers Comfort and Performance

### Technical compliance:

European Machinery Directive  
2006/42/EC Reference  
standard: EN 81-41/SIL 3

### Drive system:

Hydraulic control unit with  
indirect action by chains

### Rated speed:

up to 0.3 m/s

### Rated load:

Up to 400 kg

### Travel height:

Up to 18000 mm / 59ft

### Number of stops:

Max. 5 stops per lift

### Number of doors:

Max. 10 doors per lift

### Door Types:

Swing / Sliding Door

### Pit:

150 mm (no pit is required when  
there is a threshold/ramp)

### Shaft top height:

2450 Mm In Existing Shafts /  
2550 Mm With Its Own Shaft

### Platform control:

Automatic (one-touch) with  
call reservation

### Environment:

Indoor / Outdoor

### Emergency lowering:

Battery-operated  
emergency lowering

### Control voltage:

24V





Z250 H



NE





Z250 F





## Z250 SPECIFICATION

If you are looking for immediate requirements Z250- Platform is the key.



Technical Compliance	Machine Directive 2006/42/EC Reference Standard: EN 81-41
Drive System	Advanced Belt drive with Pulley System
Rated Speed	0.15 m/s
Rated Load	Up To 250kg
Travel Height	Up To 7000 Mm / 22.9ft
Number Of Stops	Max. 3 Stops Per Lift
Number Of Doors	Max. 6 Doors Per Lift
Door Types	Swing Door
Pit	100 mm (No Pit Is Required In Case Of Threshold/Ramp)
Shaft Top Height	2300 Mm In Existing Shafts / 2400 Mm With Its Own Shaft
Platform Control	Hold to Run / Remote Call
Environment	Indoor / Outdoor
Emergency Lowering	Battery Operated Emergency Lowering With Infrared Sensor
Control Voltage	24V



Z200





## Z220 INBUILT SPECIFICATION.

### Generic Spec:

Driven System	: Driven by Air - Vacuum Technology
Maximum Stops	: 4 Stops (G+3)
Max Travel Height	: 12344mm / 40.5 Feet
Rated Load / Capacity	: 222 Kg
Travel Speed	: Up to 0.15 M/sec
Clear Space Required	: 1010mm
Power Consumption	: 3.7 Kva (Stabilized Power)
Electrical Requirement	230v, 60/50 Hz, 22 Amp : Single Phase Power
Installation	: Indoor / Outdoor
No. of Doors	: Max. 7 Doors
Door Types	: Swing Door

### Internal Specifications

Travelling Cabin Height	: 2100mm
Travelling Cabin Diameter	: 830mm
Type Of Control	: Push And Run
Power Supply Inside Cabin	: 24 Volt DC
Cabin Operating Panel Type	: Single Collective With Bicolour Buttons
Overload Indication	: Built In On COP (Cabin Operating Panel)
Cabin Ceiling	: Basic - LED Spot Light With Fan Elegance Finish - Starry Sky & Opal

### External Specifications

External Cylinder Diameter	: 930mm
Shaft Construction	: Composition of Aluminum & Galvanized Steel
Special Glass	: Polycarbonate (250 times stronger than glass)
Minimum Overhead Clearance	: 2800mm
Clear Door Access	: 1962mm x 526mm
Clear Door Opening	: 90 Degree





# Z220 SPLIT





## Z220 SPLIT SPECIFICATION.

### Generic Spec:

Driven System	: Driven by Air - Vacuum Technology
Maximum Stops	: 4 Stops (G+3)
Max Travel Height	: 12344mm / 40.5 Feet
Rated Load / Capacity	: 222 Kg
Travel Speed	: Up to 0.15 M/sec
Clear Space Required	: 1010mm
Power Consumption	: 3.7 Kva (Stabilized Power)
Electrical Requirement	: 230v, 60/50 Hz, 22 Amp Single Phase Power
Installation	: Indoor
Panel Box Req. Space	: 500mm x 300mm
No. of Doors	: Max. 7 Doors
Door Types	: Swing Door

### Internal Specifications

Traveling Cabin Height	: 2100mm
Traveling Cabin Diameter	: 830mm
Type Of Control	: Push And Run
Power Supply Inside Cabin	: 24 Volt DC
Cabin Operating Panel Type	: Single Collective With Bicolour Buttons
Overload Indication	: Built In On COP (Cabin Operating Panel)
Cabin Ceiling	: Basic Finish - Spot Light With Fan Elegance Finish - Starry Sky & Opal

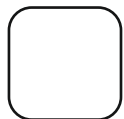
### External Specifications

External Cylinder Diameter	: 930mm
Shaft Construction	: Composition Of Aluminum & Galvanized Steel
Special Glass	: Polycarbonate (250 Times Stronger Than Glass)
Minimum Overhead Clearance	: 2500mm
Landing Cylinder Height	: 2000mm
Clear Door Access	: 1962mm x 526mm
Clear Door Opening	: 90 Degree



## Z220 INTERIOR & EXTERIOR FINISHES

### Standard Colors



Pure White



Cream White



Black

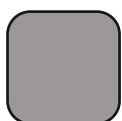


Ashen Grey

### Metallic Colors



Dark Grey



Sparkling Metallic

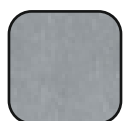


Gold



Bronze

### Textured Colors



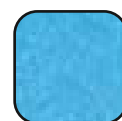
Grey



Flint Grey



Beige



Cool Blue



Glossy Brown



Green



Flora Blue



Maroon

### Carpet Colors



Taupe Beige



Scarlet Red

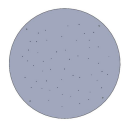


Ashen Grey



Black

### Cabin Ceiling



Galaxy



Spot Light



Opal



Glow Lights





## Z400 / Z350 / Z250 FINISHES

### PREMIUM CABIN FINISHES



Dark Wood



Brown Wood



White Wood



Warm Wood



Grey Wood

### TEXTURE STAINLESS STEEL



2067



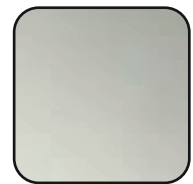
3125



320

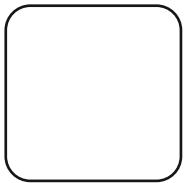


Stainless Steel

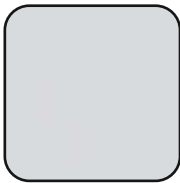


Mirror

### ACCENT CORNERS



9003



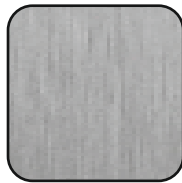
7035



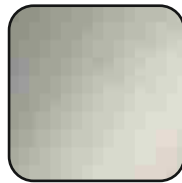
7012



7021



Hairline



Mirror



Gold

### FLOORING

#### MARBLE



Grey



Black



White



Sand

#### CARPET



Cream



Sand



Grey





## TRIZO HOME ELEVATORS PVT LTD

Site No. 15, 16, 17, K No. 354, Kalkere Vlg, Bangalore North,  
Horamavu, Bangalore - 560 043, Karnataka  
Contact: +91 7411579404 | Email: info@trizo.com

[www.trizoelevators.com](http://www.trizoelevators.com)

